

WHO WE ARE



Steve Homich has over six years of experience with soft tissue simulator trainers and educational models. He is married to Amy and has two children.

He partnered with several key people as follows;



Chris Putt is from Greenville, MI and has been a longtime friend of Steve's. He is an investor and active participant in the business. He will assist with sales activities. Chris is a chemical engineer by trade and is employed in the water treatment industry, primarily industrial. He is married to Kim and has two children.



Laszlo Jaloveczki brought the Hungarian effort to fruition. We started a facility in Budapest, Hungary so as to develop the products that are needed to be offered.

Laszlo owns an engineering/equipment manufacturing firm in Budapest. This firm also supports Grays Bones with excellent design, rendering, and engineering support.



Mike Suveges is from the Detroit, MI area and is an investor into the company. Both he and his wife Elaine add constructive and positive input to the company and will participate where needed. He has two children and seven grandchildren.



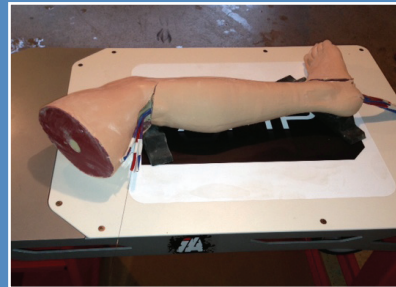
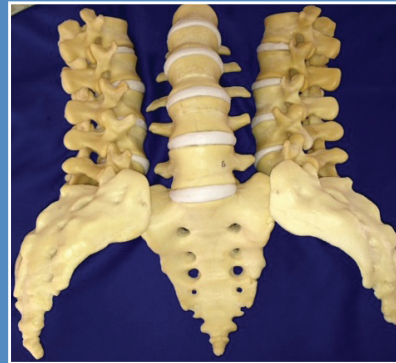
Lou Knooihuizen, VP Commercial Lending at Choice One Bank, joined our team in November 2013. He is not only an investor but will help guide us financially and with our business decisions.



Attila Kindert lives in Budapest, Hungary and manages our Hungarian manufacturing and new product development. He is married to Orsi and has two children.



Reka Meszaros lives in Budapest, Hungary as well and manages our Hungarian customer service and sales. She has four children.



MISSION STATEMENT

Grays Bone and Joint Models was formed to passionately produce educational training models and sales tools to assist our customers in meeting their goals. With integrity and the best of technology, we will meet and exceed your expectations. We want to help make the world a better place.

www.graysbone.com



GRAYS BONE AND JOINT MODELS

United States

Cook-DeVos Center for Health Sciences
301 Michigan Street NE, Suite 532
Grand Rapids, MI 49503

Hungary

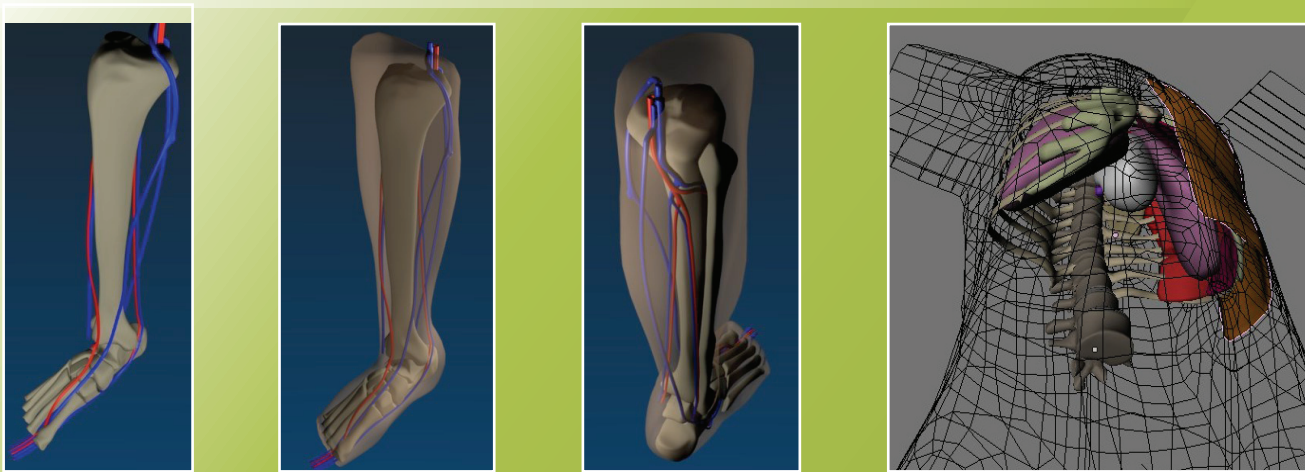
H – 1117 Budapest
Budafoki ut 187-189

Steve Homich (616) 901-0291
steve.homich@graysbone.com

Chris Putt (616) 340-3253
chris.putt@graysbone.com

www.graysbone.com

DESIGN & RENDERING CAPABILITIES



Renderings can also include animation videos for your projects.

CORE NICHE OF OUR BUSINESS

Soft Tissue Surgical Trainers

We are focusing our efforts on working with our medical customers to design, develop, and produce soft tissue surgical simulator trainers with the best of tactile feel and realism.

Our team uses current technology from the design and rendering phase, new product development phase utilizing 3D printing technologies and CNC machining as well as hand craftsmanship right through production and shipping of the trainers.

Workshop Bones (GraysBones™)

GraysBones™ is based on true anatomy derived from the Zygote Anatomical software platform. We can also produce custom sizes and shapes as per your requirements.

GrayBones exhibit excellent fluoro properties as well as blood options.

Other Business Segments

Models, Replications, and Tradeshow/Marketing Displays

Custom models and tradeshow/marketing displays are also available to support your needs. Please challenge us with your ideas. Custom eye catching models and displays work and we would like to be part of your marketing and educational solutions.

Sales Accessories Such As Sales Demonstration Cases and Tools

We can assist you with convenient and appealing cases and tools to fit your needs.

Design and Engineering

Grays Bone offers complete concept design, rendering, project engineering as well as in house 3D printing capabilities. This allows us to have control and quicker turnaround times. Complete project management comes with every new project that we do so that all parties informed and there are no surprises.

THE PROCESS

